

Sustainable company Eggplant

Best practices related to the theme of sustainability that are related to business ideas, productive activities that could create a value that is not only economic.

Describe the BEST PRACTICE

Proposer Country : Italy



To which subject of the Sustainability does it refer?

7 – affordable and clean energy and, to a lesser extent
12 – responsible consumption and production.

Who does it practise ?

Eggplant S.r.l. – Domenico Centrone, Vito Emanuele Carofiglio and Paolo Stufano.

Where? (If it belongs to B type, please indicate the geographic place)

In the Apulia Region, in Southern Italy, Bari.

When?

Since 2013.

Why do you think that this best practice can be exported?

Because I think to reuse the scraps of the urban's activities is really helpful to fight the wastage.

Describe the activity

This company provides advanced bioplastic-based solutions. It reuses organic leftovers and waste waters coming from towns to make new materials -such as fertilizer- and sell them on the market. One of the most important goals of the company is to obtain final products without contributing to pollution.

WEBSITE

<http://www.eggplant.it/>

ACTIVE SCIENCE – Outside and inside the sea – Project

Best practices related to the theme of sustainability that are related to business ideas, productive activities that could create a value that is not only economic.

Describe the BEST PRACTICE

Proposer Country : Italy



To which subject of the Sustainability does it refer?

8 – Decent Work and Economic Growth

14 – Life Below Water

17 – Partnerships for the Goals

Who does it practise ?

I.C. Renato Moro (School); “Co.MIR” – Southern Cooperative Surveys and Researches, “Ittica Jonica”- Cooperative Society, Department of Biology of the “A. Moro” University of Bari, Networked with the IISS- High School of Applied Sciences – Industrial Technician with sections of Computer Science and Telecommunication, Chemistry, Materials and Biotechnology “Majorana” Martina Franca.

Where? (If it belongs to B type, please indicate the geographic place)

In the Apulia Region, in Southern Italy, in the sea of Taranto.

When?

The activity took place during the academic year 2016-2017

Why do you think that this best practice can be exported?

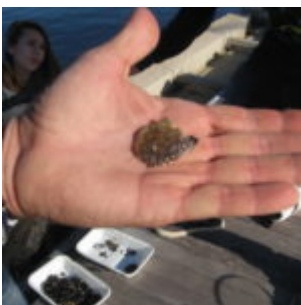
This activity is exportable as Best Practice because it is an important partnership between school, university and workers' consortiums.

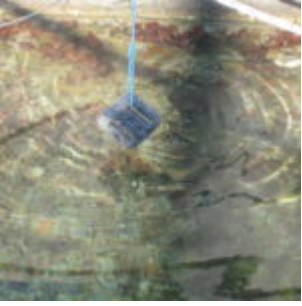
Describe the activity

The project was intended to expose the students to science and its research method throughout a task oriented and guided practice teaching approach. The on-site visits on the coast line, for inspection, detection and sample survey and collection, aimed to learn more about the oyster reproductive cycle (*Ostrea Edulis*).

Considering the local oyster farming cultural and historical roots, the oyster spat collection, the growing cycle, the organisms set aside, the morphometric evaluations and the environmental assessment were the main activities developed on the matter.

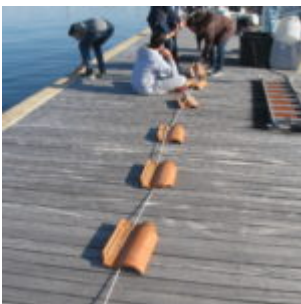
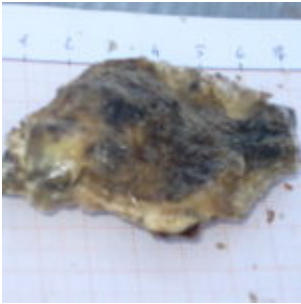
MEDIA





Programma di monitoraggio della qualità ambientale
"PROGRAMMA ATTIVITÀ FIDUCIARI (P.A.F.) - ALGHE"

DATA	LOCALITÀ	OPERATORE	CONDIZIONE
SIST. C.A. LOMBRIGLIA - ALTISSA			
			PREZIO
			1
			2
			3
			4
			5
			6
			7
			8
			9
			10
			11
			12
			13
			14
			15
			16
			17
			18
			19
			20



WEBSITE

[SCIENZATTIVA fuori e dentro l'acqua](#)

Environment and Sustainable Development using SCRATCH

SAGRADO CORAZÓN IKASTETXEA students talk about Environment and Sustainable Development using SCRATCH.

Scratch helps young people learn to think creatively, reason systematically, and work collaboratively – essential skills for life in the 21st century.

Scratch is a programming language and an online community where children can program and share interactive media such as stories, games, and animation with people from all over the world. Scratch is designed and maintained by the Lifelong Kindergarten group at the MIT Media Lab.

Here are their jobs:

Maria A.

<https://scratch.mit.edu/projects/145812195/#player>

Martin B.

<https://scratch.mit.edu/projects/146320629/>

Andreea D.

<https://scratch.mit.edu/projects/144579324/#player>

Ibai E.

<https://scratch.mit.edu/projects/143314433/>

Oier E.

<https://scratch.mit.edu/projects/143315016/>

Jone E.

<https://scratch.mit.edu/projects/145912859/#player>

Leire G.

<https://scratch.mit.edu/projects/146016579/#player>

Ander H.

<https://scratch.mit.edu/projects/136844015/>

Izaro I.

<https://scratch.mit.edu/projects/143315498/>

Eñaut L.

<https://scratch.mit.edu/projects/143314769/#player>

Maddi M.

<https://scratch.mit.edu/projects/143314822/>

Ariane M.

<https://scratch.mit.edu/projects/146320393/>

Arkaitz O.

<https://scratch.mit.edu/projects/145166572/>

Lezo R.

<https://scratch.mit.edu/projects/142141453/>

Alaine R.

<https://scratch.mit.edu/projects/145815292/>

Andoni R.

<https://scratch.mit.edu/projects/145954046/#player>

Ari U.

<https://scratch.mit.edu/projects/145815580/>

Unai A.

<https://scratch.mit.edu/projects/145379094/>

Kiara B.

<https://scratch.mit.edu/projects/144485728/>

Iñigo B.

<https://scratch.mit.edu/projects/142887039/#player>

Eneko B.

<https://scratch.mit.edu/projects/144144080/>

Hiart C.

<https://scratch.mit.edu/projects/145683870/#player>

Oier C.

<https://scratch.mit.edu/projects/142885264/#player>

Endika E.

<https://scratch.mit.edu/projects/154323248/>

Ekhiotz G.

<https://scratch.mit.edu/projects/145670330/#player>

Andoni G.

<https://scratch.mit.edu/projects/144136739/#player>

Olaia H.

<https://scratch.mit.edu/projects/136622738/#player>

Almike I.

<https://scratch.mit.edu/projects/145379982/#player>

Eider M.

<https://scratch.mit.edu/projects/145381463/#player>

Asier O.

<https://scratch.mit.edu/projects/142886443/#player>

Xabier P.

<https://scratch.mit.edu/projects/144137148/#player>

Ayelen R.

<https://scratch.mit.edu/projects/144138271/#player>

Irune R.

<https://scratch.mit.edu/projects/145383262/#editor>

Itxaso S.

<https://scratch.mit.edu/projects/144617849/>

Jon T.

<https://scratch.mit.edu/projects/145378724/>

Kepa U.

<https://scratch.mit.edu/projects/145729996/#editor>

Enara Z.

<https://scratch.mit.edu/projects/144617258/#player>

[DBH1-EKO INFORMATIKAKO JOLASAK](#)

The students of the Primary School in Taranto have studied the environmental questions

The students of the Primary School in Taranto have studied the environmental questions proposed by the Erasmus+ Project

“G.R.E.E.N IN EUROPE” starting from the discussion of what they think environment is! Working in pair or in group they have immediately shown great interest towards the environmental education and the activities proposed by their teachers.

All the subjects have been involved in this training period: science, foreign languages , geography as well as the study of the ICT have been instruments to lead the students to think about the environmental questions. Looking around their own territory they found out what are the “environmental problems” of their town and which “GOOD PRACTICES” the town and its citizens can improve to solve its own environmental problems.

At the moment they are focusing the “best practices” linked to the exploitation of TARANTO SEA and its treasures (the benefit of aquatic plants, the mussils collectors ,dolphins safe, tortoise health).

At the same time , in order to get a “green lifestyle” ,they started finding real “green actions” to do every day at school and at home (recycle of water and plastic bottles, clean up of their classrooms..., bedrooms...)!

[ERASMUS_PLUS_Bilbao_presentation_SP_ICR_Moro_Taranto](#)